



I purchased this 1978 model while living at Camp Verde AZ. It is one of last 35 GMC Motorhomes ever built. I was looking for a model that had the newer engine (305 vs 455) all the recalls and latest technology. For example two separate air pumps for the air bag suspension.

Found this unit in Cottonwood, AZ about 2008.

It took a lot of work and upgrades, from new aluminum wheels with new tire size and type to air bags, brakes, freshwater tank, exhaust system, catalytic heater and more. I even added an electric fuel pump with option to pump fuel into an offline gas tank for lawn mowers etc. And of course I added the electric vacuum pump to support the vacuum power brakes in case of engine failure on an incline.

The original purpose for purchasing the motorhome, was to use when we move to Florida. We needed to travel with lots of dogs, 8 Maltese, a Havanise and Cocker Spaniel. The time finally came in May of 2013, only it was to Wisconsin rather than Florida. Problems purchasing a home in Florida is another story.

After we were moved in the new place at Minong WI there was no further need for the motorhome. I placed an ad on Craigslist and soon had a buyer from Michigan. He flew into Hayward airport in a private plane. I drove the motorhome to the airport and Bob followed me in his car. Met with the buyer, he checked out the motorhome and handed me an envelop containing 140 one hundred dollar bills. I gave him the title, said thankyou and Bob and I headed for the bank.









Added gauge to show refrigerator temperature



Added microwave



Thermostat for catalytic heater



Added RPM display



Added generator AMPS meter



Repositioned suspension air pressure gauges



Solar panel gauge



Added fold away step



Added bumper step/license plate holder



Added engine vents



Upgraded tires to 225/75R16 (was 8.75 16.5)



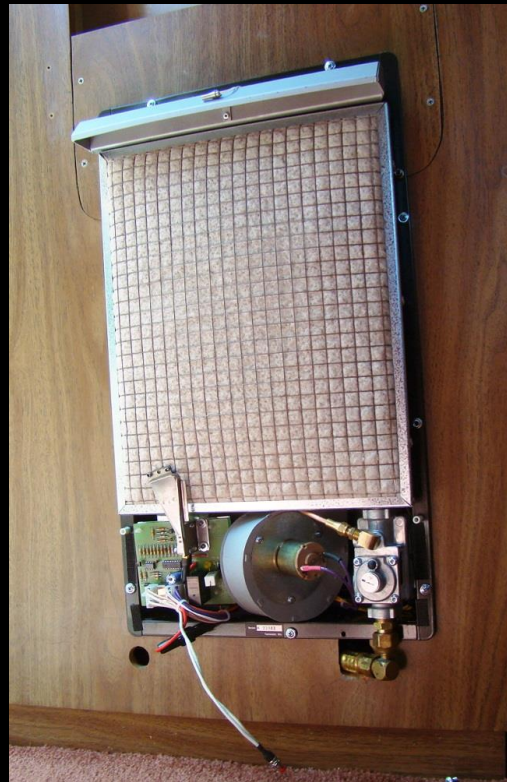
I purchased the six aluminum wheels with the new tires. They were mounted, balanced, driven some number of miles and then trued to roundness prior to shipping.



Drum brakes on the 4 rear wheels

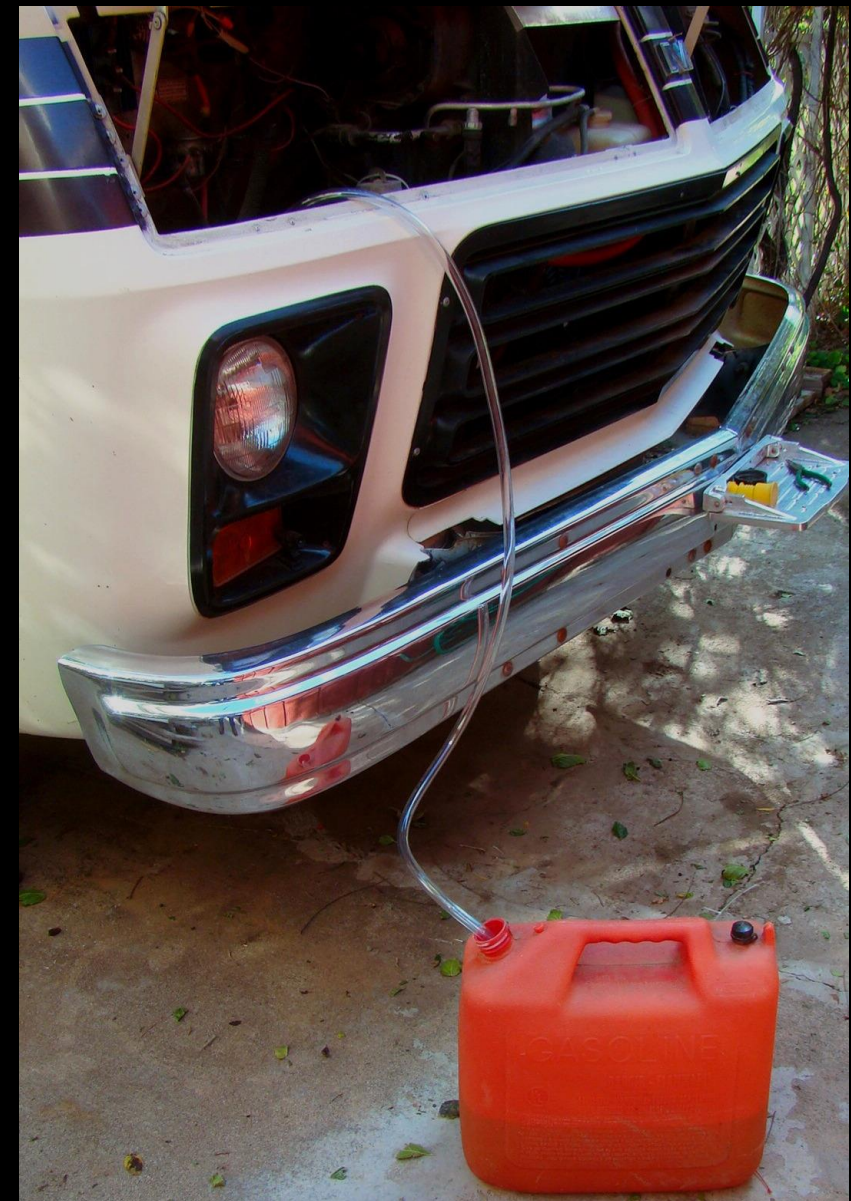
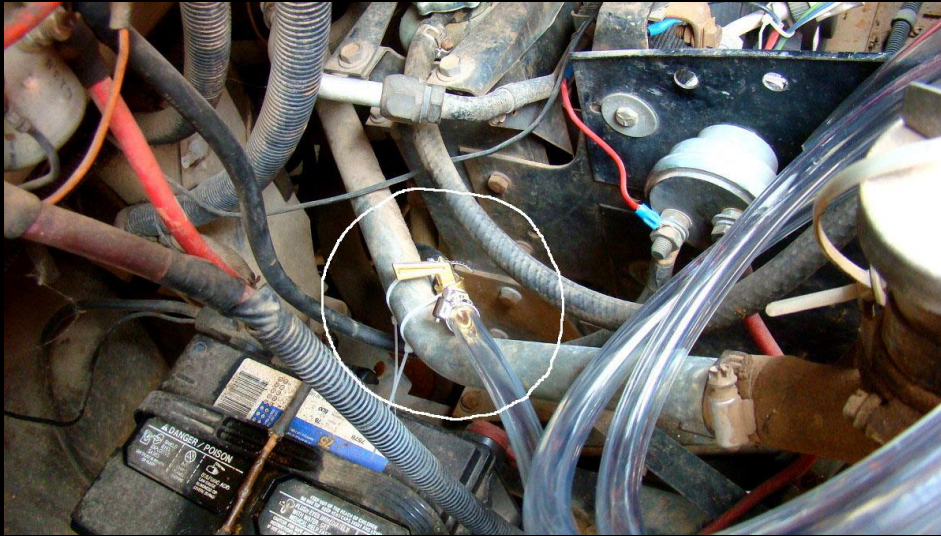


Electric vacuum pump incase engine vacuum is lost



Catalytic heater
(Automatic vented)





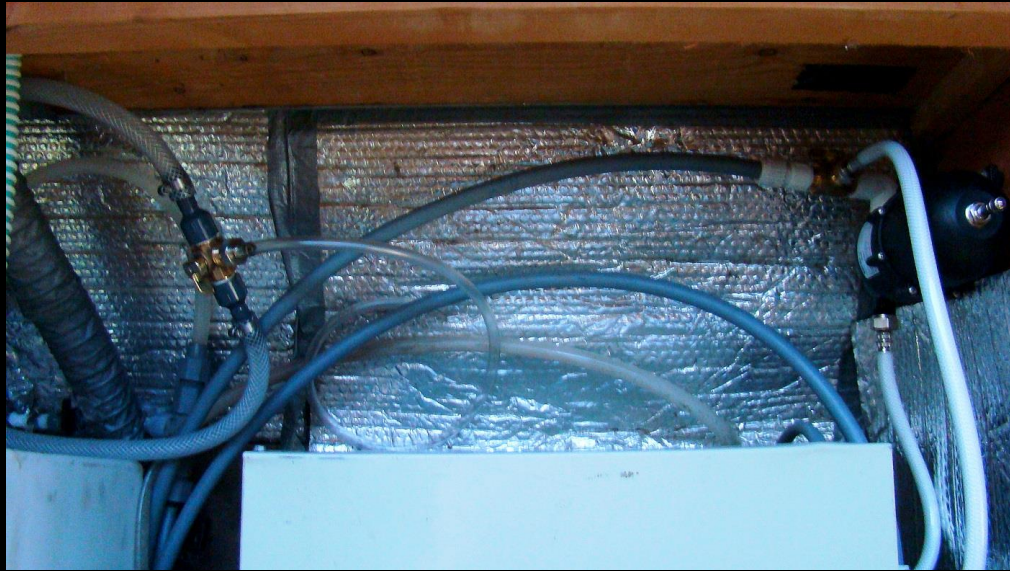
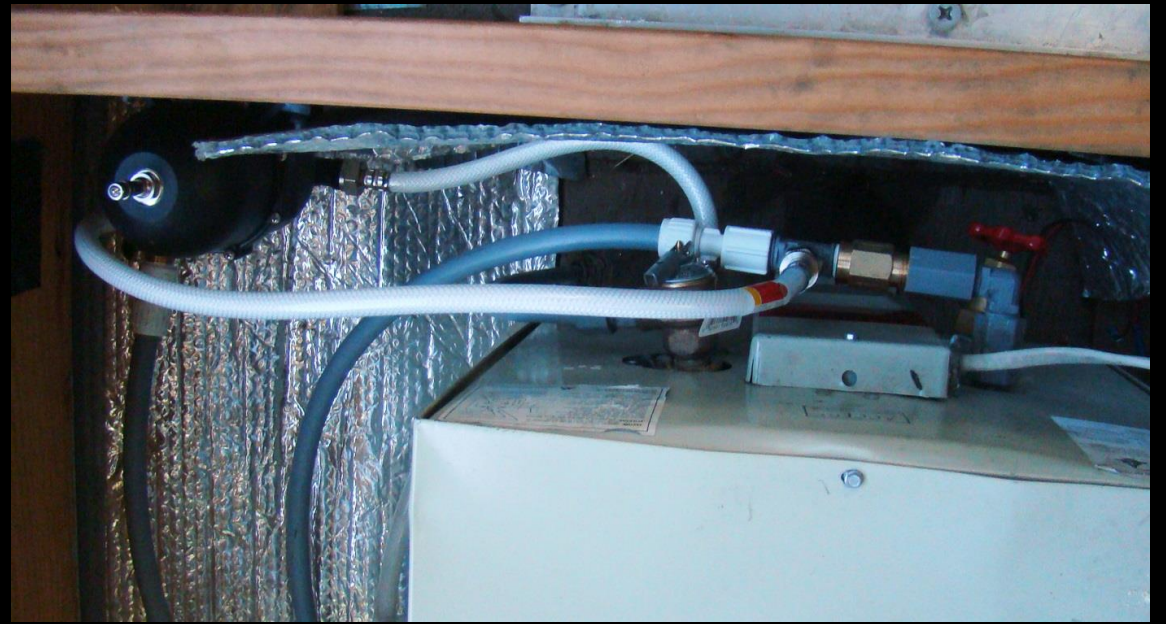
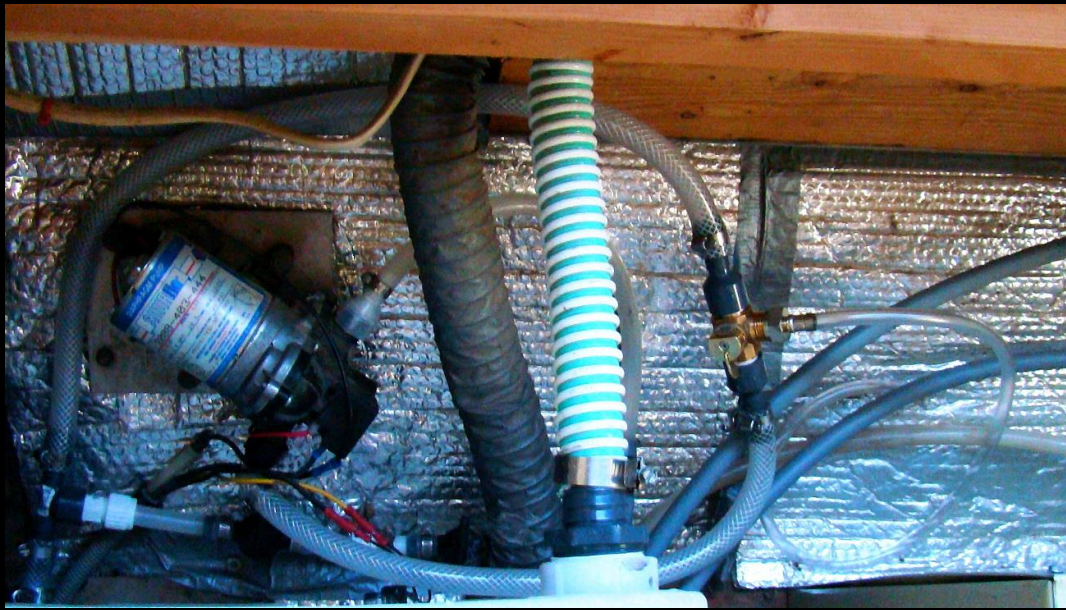
Installed electric fuel pump, made it easier for starting. Gas pressure is built up prior to the engine turning over. It has two 25 gallon gas tanks with switch for main or auxiliary. Added valve for pumping into external gas container. Facilitates use of gasoline during long storage intervals, and handy for fueling the lawn mower etc.



Replaced exhaust system



Replaced one of the CV (Constant Velocity) boots



Installed a water system winterizing kit, allows charging system with antifreeze



Storage cover